



Fitting Instructions

TOWBAR C34Q
For CITROEN C5 HATCHBACK
2004-2008

MATERIALS

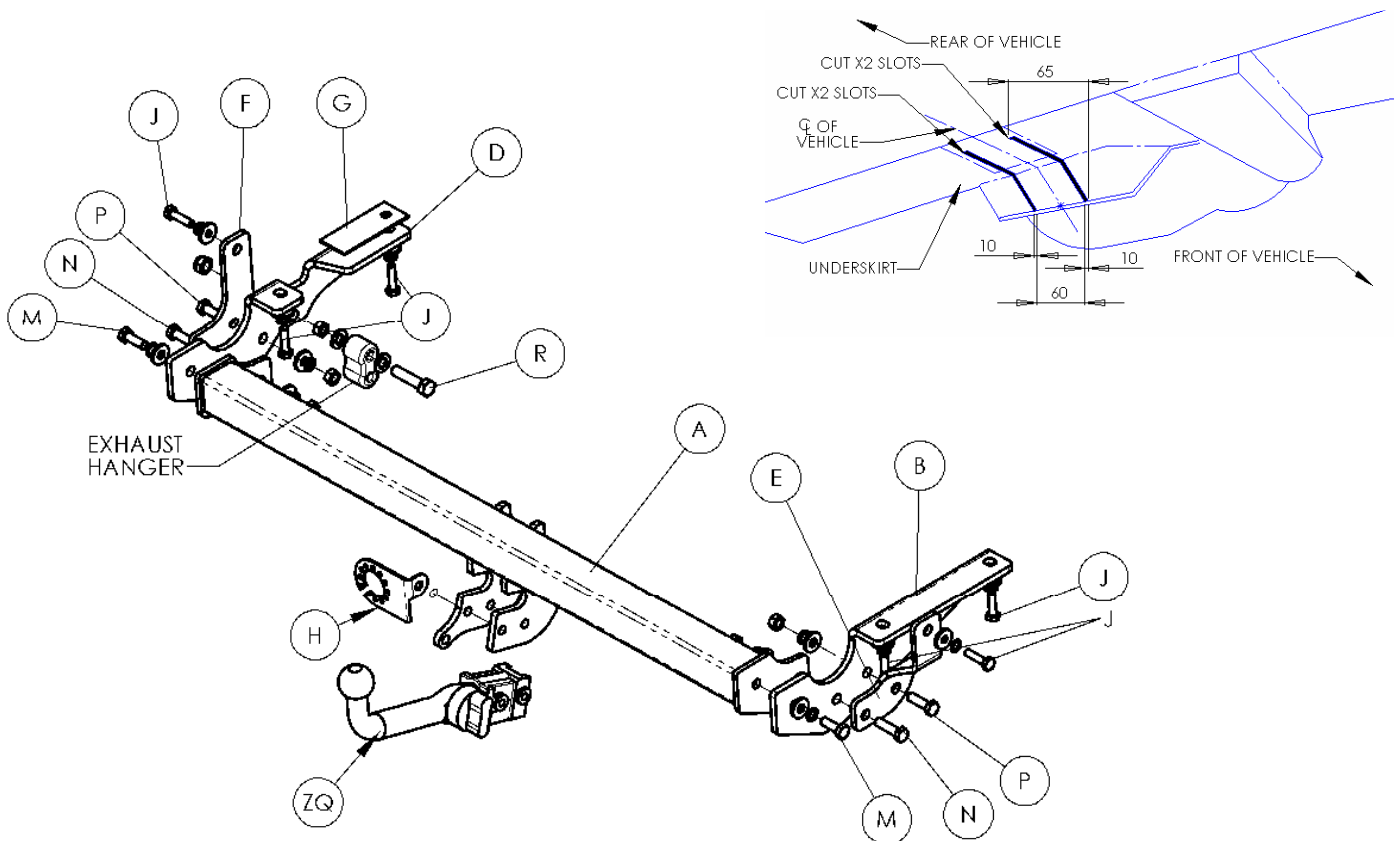
A	1	Cross Bar with European facing to 94/20/EC A50-1
B	1	RHS Plate
D	1	LHS Plate
E	1	RH Support Bracket
F	1	LH Support Bracket
G	1	Spacer Plate
ZQ	1	Detachable Kit (ZQ2006A)
H	1	Electrical Plate
J	6	M10x40x1.5 Bolt, Lock Washer and Washer (30 mm OD)
M	2	M12x35x1.75 Bolt, Lock Washer and Washer (30 mm OD)
N	2	M12x45x1.75 Bolt, Nut, Lock Washer and Washer (30 mm OD)
P	2	M12x40x1.75 Bolt, Nut, Lock Washer and Washer (30 mm OD)
R	1	M14x90x2.00 Bolt, Nut, Nyloc Nut, and x2 Washers (27 mm OD)

FITTING

1. Ensure the box contains every item as listed above.
2. Lower the exhaust from the upper hanger and remove the black plastic underskirt. **(x2 torq screws on the bottom edge of the skirt, x1 central nut, and x5 screws connecting the heat shield. At this point pull the heat shield and underskirt from under the bumper edge to gain access to the x2 horizontal nuts fixing the skirt to the rear panel.)**
3. Loosely attach the LHS and RHS Plates (**B and D**) to the chassis rails using fixings (**J**), ensuring the Spacer Plate (**G**) is sandwiched between the chassis rail and side arm.
4. Slide the Cross Bar (**A**) under the bumper and loosely attach to side plates (**B and D**) using the relevant fixings. Ensure Cross Bar (**A**) is in its correct position and fully tighten the rear most fixing (**J**) on the off side. This is due to clearance being restricted once Bracket (**E**) is in place.
5. Attach Support Brackets (**F & E**) to the chassis rail and Side Brackets using the relevant fixings. Relocate the exhaust hanger using fixing (**R**) and attach to Side Plate (**D**). Please ensure the washers support the hanger and the Nyloc Nut is threaded onto the bolt last.
6. Attach the Detachable Kit (**ZQ**) as per the additionally provided Fitting Instruction. Fasten the Electrical Plate (**ZEP2**) via fixing (**H**) and attach to the cross bar.
7. Fully tighten all fixings to the recommended torque settings and cut the under skirt as illustrated below (x2 Slots, symmetrical to the centre line of the bumper, 10mm wide by 65mm deep) and refit in reverse.

Note: This towbar must be used with either a Witter Towball (part number Z11) or Class A50-1 or A50-X towball dimensionally conforming to A50-1 with a 'D' and 'S' value greater than or equal to that of the towbar. Also for use with Witter Quantum Detachable Towball Unit (part number ZQ2006). Please refer to the vehicle specification for the trailer weight and nose limits, which **must be observed**.

Recommended torque settings: M8 - 27Nm, M10 - 53 Nm, M12 - 95 Nm (Grade 10.9-139Nm), M14 - 150 Nm, M16 - 214 Nm





Fitting Instructions

QUANTUM DETACHABLE
TOWBALL SYSTEM
(ZQ XXXX)

MATERIALS

A	1	Receptor/Socket for Towball
T	1	Detachable Towball
K	2	Keys for Detachable Towball
X	4	M12 x 25 x 1.75mm Bolts, Spring Washers and Flat Spacer Washers (25mm O.D)
FC	1	Fixed Weather Cover
RC	1	Removable Weather Cover
L	1	Centreline Label
B	1	Bag
ZQM1	1	Operation Manual

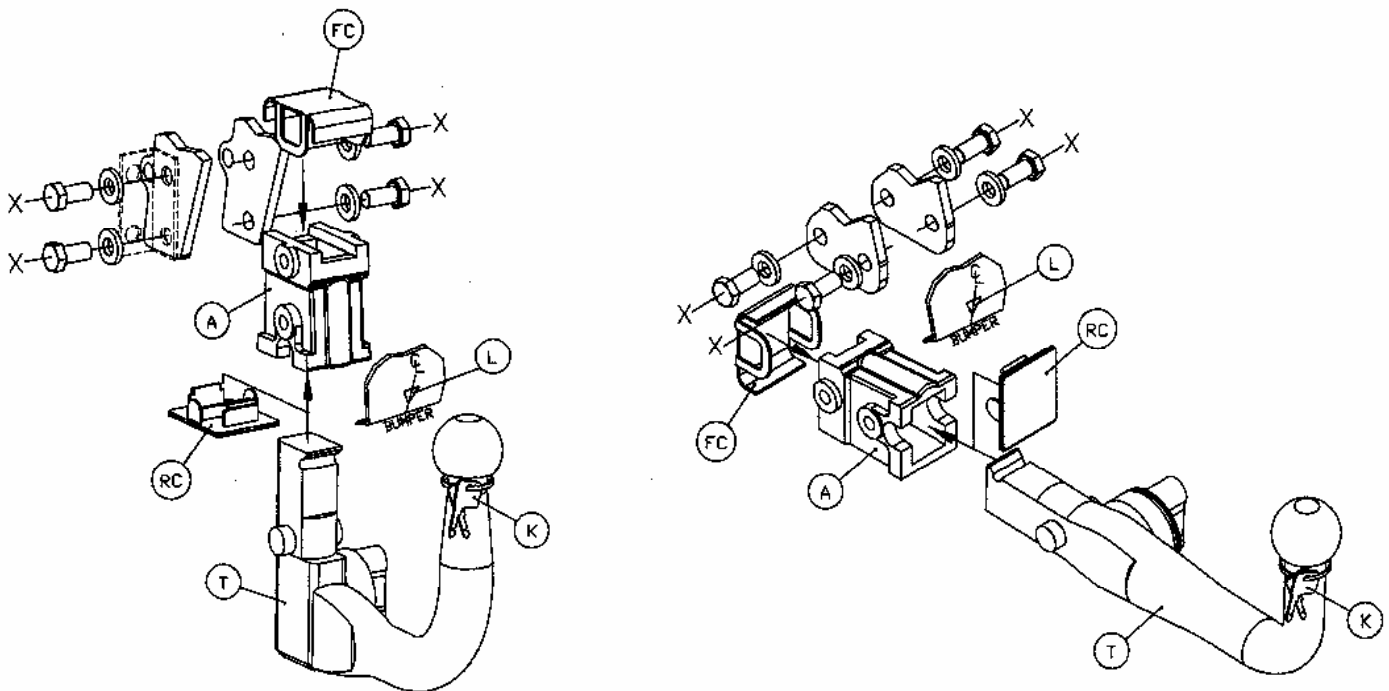
INSTALLATION PROCEDURE

1. Place black plastic fixed weather cap (FC) over forward/ (horizontal system) / upper (vertical system) holes of receptor/socket (A), insert receptor/socket (A) into gap between mounting plates on the towbar, and loosely attach using bolts (X).
 - Notes: (ZEQ1), which is provided as part of the towbar should be refitted on left hand side, together with the electrical socket mounting plate (ZEP1). Only use the 25mm O.D Flat Spacer Washers (X) where there are no loose components attached, i.e. ZEQ1 (electrical socket mounting plate bracket, shown in dashed linetype below).
2. Insert detachable towball unit (T), using procedure detailed in Operation Manual provided, and ensure correct vertical alignment of the towball before fully tightening bolts (X).
3. Attach centreline label (L) to lower edge of bumper.
4. Remove keys (K) from neck of towball, and record the key number in the Operation Manual, together with the fitters name, telephone number, date fitted, vehicle model and registration number and towbar part number.

Bumper Cut – It may be necessary to trim the bumper to allow adequate clearance around the operation handle on the right hand side.

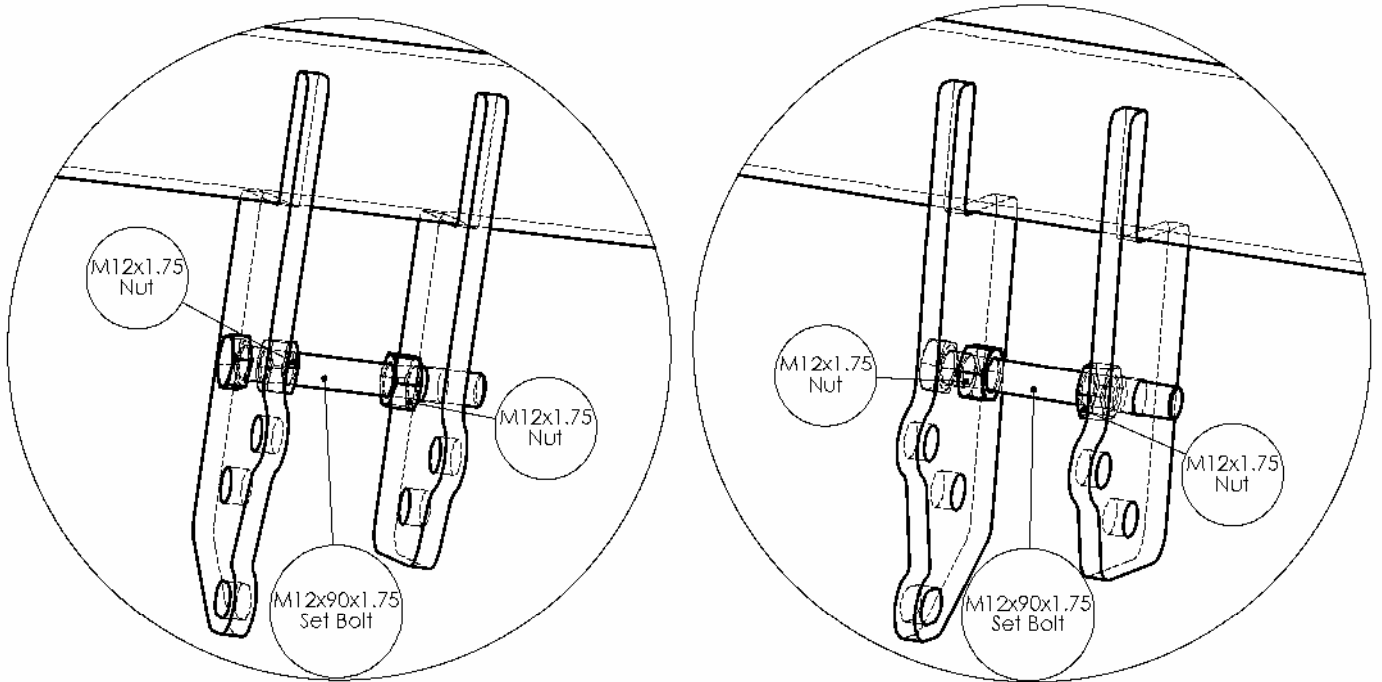
Note: It is essential that the customer/end user is familiar with the operation of the towball system, as detailed in the operation manual, which must be handed to the customer/end user.

Recommended torque settings: M12 - 95 Nm



Important – It is essential to ensure that the Operation Manual is in the possession of the end user.

Splaying Centre Profile Shapes



It may be necessary to splay the centre profile shapes further apart in order to fit the centre components of the towbar between them:

- Insert the M12x90x1.75 Set Bolt through one of the profile plates, through the hole nearest the main crossbar.
- Thread both M12x1.75 nuts onto the Set Bolt.
- Screw one of the nuts all the way on, until finger tight.
- Unscrew the other nut so that it splays the two profiles apart far enough to just fit the centre components of the towbar between them when the spreading bolt is removed, (i.e. some allowance will need to be made for "springback" of the steel).