



Fitting Instructions

TOWBAR F102Q
For FORD GALAXY
SEAT ALHAMBRA & VW SHARAN
(2000-)

MATERIALS

A	1	Cross Bar
ZF	1	Flanged Neck to EC 94/20 – A50-1 (ZF3006-A)
C	1	Side Arm (Left Hand)
D	1	Side Arm (Right Arm)
E	6	M12 x 35mm x 1.75 Bolts, Lock Washers and Large Flat Washers (40mm O.D.)
F	4	M12 x 35mm x 1.75 Bolts, Nuts and Lock Washers
G	2	M12 x 100mm x1.75 Bolts, Nyloc Nuts. (Grade 10.9)
H	1	Electrical Plate (ZEP2)
J	2	Steel Spacers (ZSB1)
CB	2	M16 x 50mm Coupling Bolts, Nuts, Lock Washers

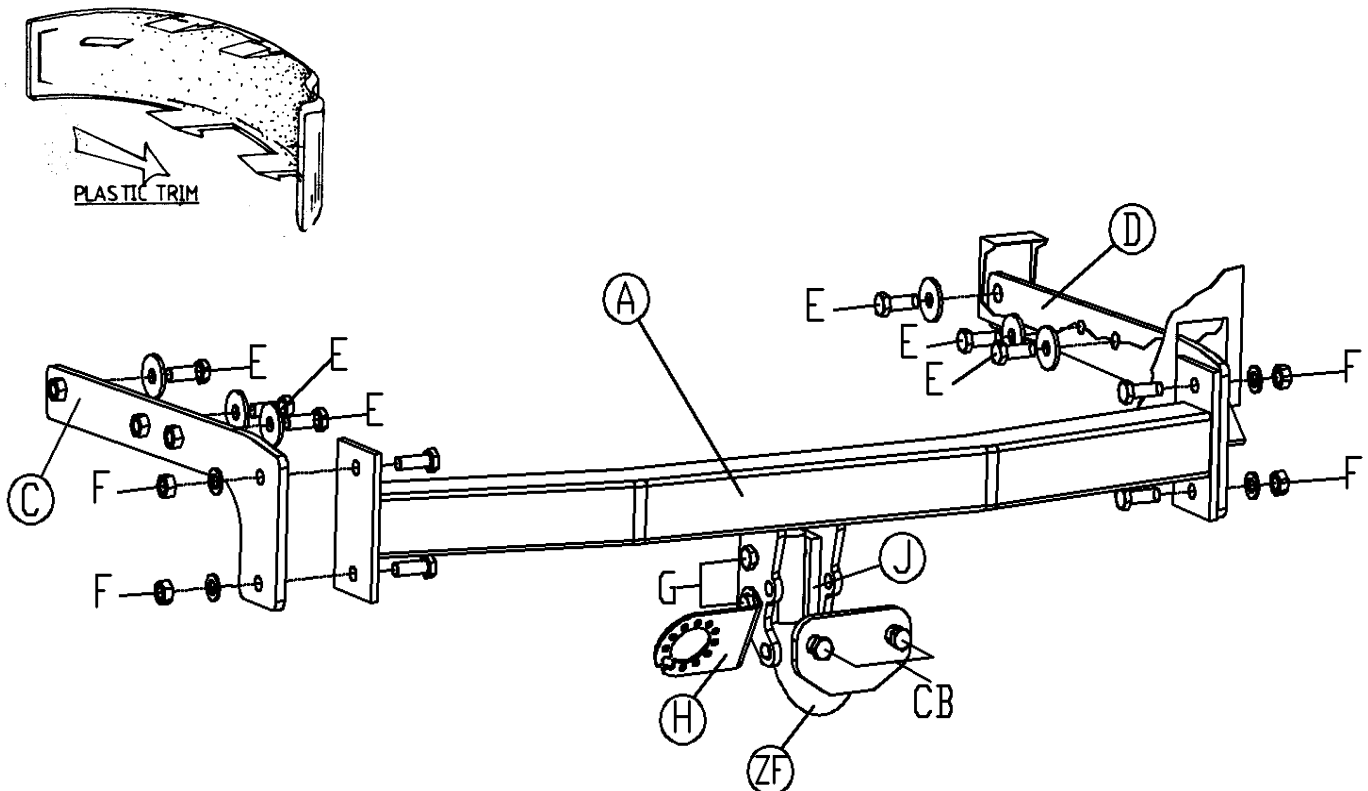
FITTING

1. Lower or remove spare wheel. Remove bumper, 3 screws in wheel arch each side, 4 nuts on rear panel and 1 bolt under plastic trim below light cluster, **Note:** The plastic trim panel has to slide rearward after the fish hook style clips have been depressed. See diagram. (Be careful not to crack).
2. Remove bumper inner shell and retain for refitting when bar is removed.
3. Insert Side Arms (C & D) into chassis and loosely attach using Bolts (E). Attach Mainframe (A) to Side Arms (C&D) using Bolts (F). **Tighten all Bolts.**
4. Attach Flanged Neck (ZF), Electrical Plate (H) and Spacers (J) to Cross Bar (A) using bolts (G), (N.B Grade 10.9 Torque setting 139 Nm). **Note:** it may be necessary to cut a small notch in bottom edge of bumper, (not visible) to allow desired positioning of plate (H). **Tighten remaining bolts.**

NOTES: This towbar must be used with either a Witter Towball (part number Z1) or Class A50-1 or A50-X towball dimensionally conforming to A50-1 with a 'D' and 'S' value greater than or equal to that of the towbar.

Please refer to the vehicle specification for the trailer weight and nose limits, which **must be observed.**

Recommended torque settings: Grade 8.8 M8 - 27Nm, M10 - 53 Nm, M12 - 95 Nm, M14 - 150 Nm, M16 - 214 Nm
Grade 10.9 M12 – 139Nm





Fitting Instructions

QUANTUM DETACHABLE
TOWBALL SYSTEM
(ZQ XXXX)

MATERIALS

A	1	Receptor/Socket for Towball
T	1	Detachable Towball
K	2	Keys for Detachable Towball
X	4	M12 x 25 x 1.75mm Bolts, Spring Washers and Flat Spacer Washers (25mm O.D)
FC	1	Fixed Weather Cover
RC	1	Removable Weather Cover
L	1	Centreline Label
B	1	Bag
ZQM1	1	Operation Manual

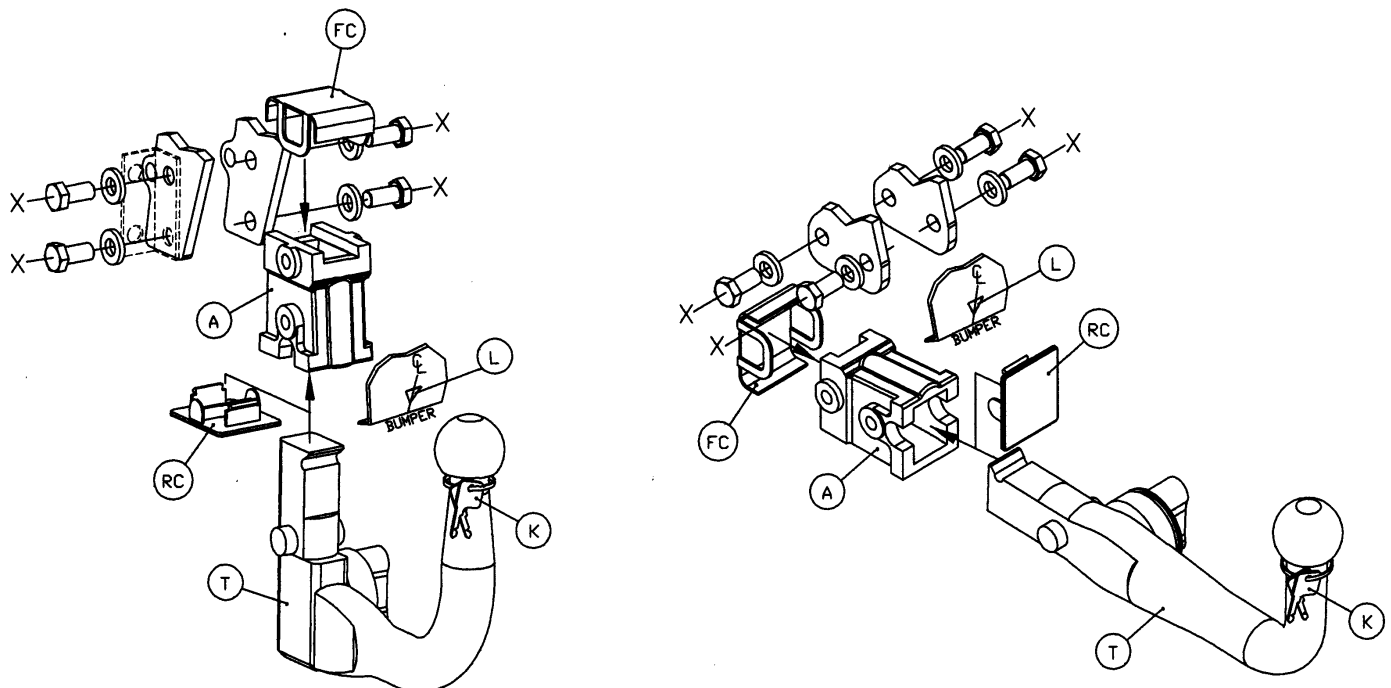
INSTALLATION PROCEDURE

1. Place black plastic fixed weather cap (FC) over forward/ (horizontal system) / upper (vertical system) holes of receptor/socket (A), insert receptor/socket (A) into gap between mounting plates on the towbar, and loosely attach using bolts (X).
 - Notes: (ZEQ1), which is provided as part of the towbar should be refitted on left hand side, together with the electrical socket mounting plate (ZEP1). Only use the 25mm O.D Flat Spacer Washers (X) where there are no loose components attached, i.e. ZEQ1 (electrical socket mounting plate bracket, shown in dashed linetype below).
2. Insert detachable towball unit (T), using procedure detailed in Operation Manual provided, and ensure correct vertical alignment of the towball before fully tightening bolts (X).
3. Attach centreline label (L) to lower edge of bumper.
4. Remove keys (K) from neck of towball, and record the key number in the Operation Manual, together with the fitters name, telephone number, date fitted, vehicle model and registration number and towbar part number.

Bumper Cut – It may be necessary to trim the bumper to allow adequate clearance around the operation handle on the right hand side.

Note: It is essential that the customer/end user is familiar with the operation of the towball system, as detailed in the operation manual, which must be handed to the customer/end user.

Recommended torque settings: M12 - 95 Nm



Important – It is essential to ensure that the Operation Manual is in the possession of the end user.