



Fitting Instructions

TOWBAR PG38Q
For Peugeot 1007
2005 -

MATERIALS

A	1	Cross Bar
B	1	Right Hand Side Arm
C	1	5mm Spacer Plates
D	2	M12x50x1.75mm Bolt, Lock Washer, Washer (30mm O.D.) and Nut
E	4	M10x40x1.5mm Bolt, Lock Washer and Washer (30mm O.D.)
ZQ	1	Detachable Kit (ZQ2008)
ZEP2	1	Electrical Plate (ZEP2)

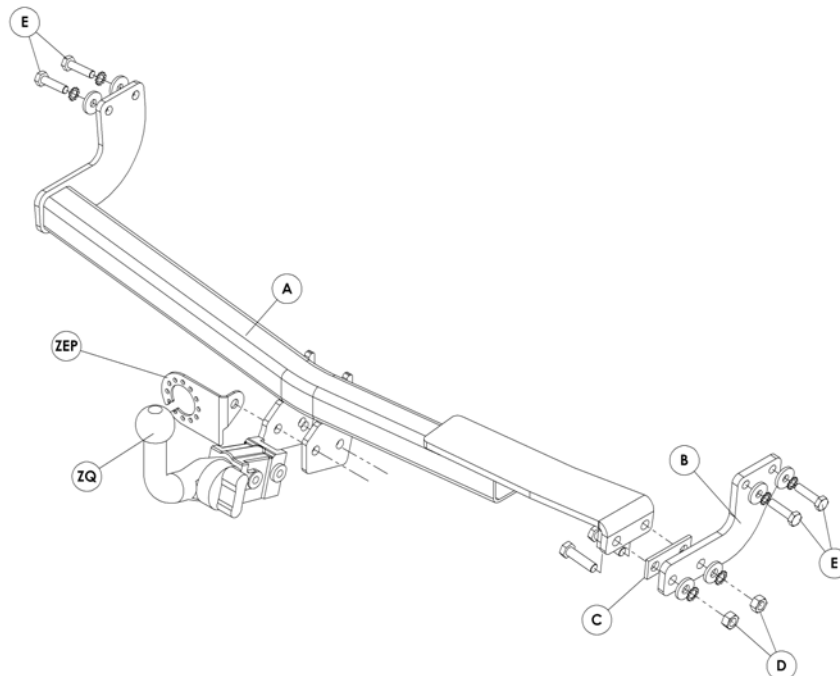
FITTING

1. Uncover the captive nuts in the chassis rails by clearing all mastic tape and compound from the outer faces. **Note: before assembly, ensure all mating surfaces are fully clear of any extrusions and debris.**
2. If necessary, temporarily pull down the left and right hand lower rear-most wheel arch linings to gain improved access to the mounting points (**x2 plastic pop rivets on each side**).
3. Loosely attach the Right Hand Side Arm (**B**) to the captive nuts using fixings (**E**).
4. Whilst preventing damage to the rear face of the bumper, carefully slide the Cross Bar (**A**) over the exhaust. Loosely attach to the captive nuts using the remaining fixings (**E**).
5. Attach the Cross Bar (**A**) to the Right Hand Side Arm (**B**) using fixings (**D**). **Note: In some cases, due to vehicle variance, it may be necessary to use the provided 5 mm thick Spacer (**C**) to fill the gap between the Right Hand Side Arm (**B**) and Cross Bar (**A**). If this is the case, measure the gap and determine whether the Spacer (**C**) is required.**
6. Loosely attach the Detachable Kit (**ZQ**) and Electrical Plate (**ZEP2**) to the Cross Bar (**A**) as per the additionally provided Fitting Instruction.
7. Fully tighten every fixing to the recommended torque settings.
8. If released, reattach the lower rear-most wheel arch linings.

Note: This towbar must be used with either a Witter Towball (part number Z11) or Class A50-1 or A50-X towball dimensionally conforming to A50-1 with a 'D' and 'S' value greater than or equal to that of the towbar.

Please refer to the vehicle specification for the trailer weight and nose limits, which **must be observed**.

Recommended torque settings: M8 - 27Nm, M10 - 53 Nm, M12 - 95 Nm (**Grade 10.9** - 139 Nm), M14 - 150 Nm, M16 - 214 Nm





Fitting Instructions

QUANTUM DETACHABLE
TOWBALL SYSTEM
(ZQ XXXX)

MATERIALS

A	1	Receptor/Socket for Towball
T	1	Detachable Towball
K	2	Keys for Detachable Towball
X	4	M12 x 25 x 1.75mm Bolts, Spring Washers and Flat Spacer Washers (25mm O.D)
FC	1	Fixed Weather Cover
RC	1	Removable Weather Cover
L	1	Centreline Label
B	1	Bag
ZQM1	1	Operation Manual

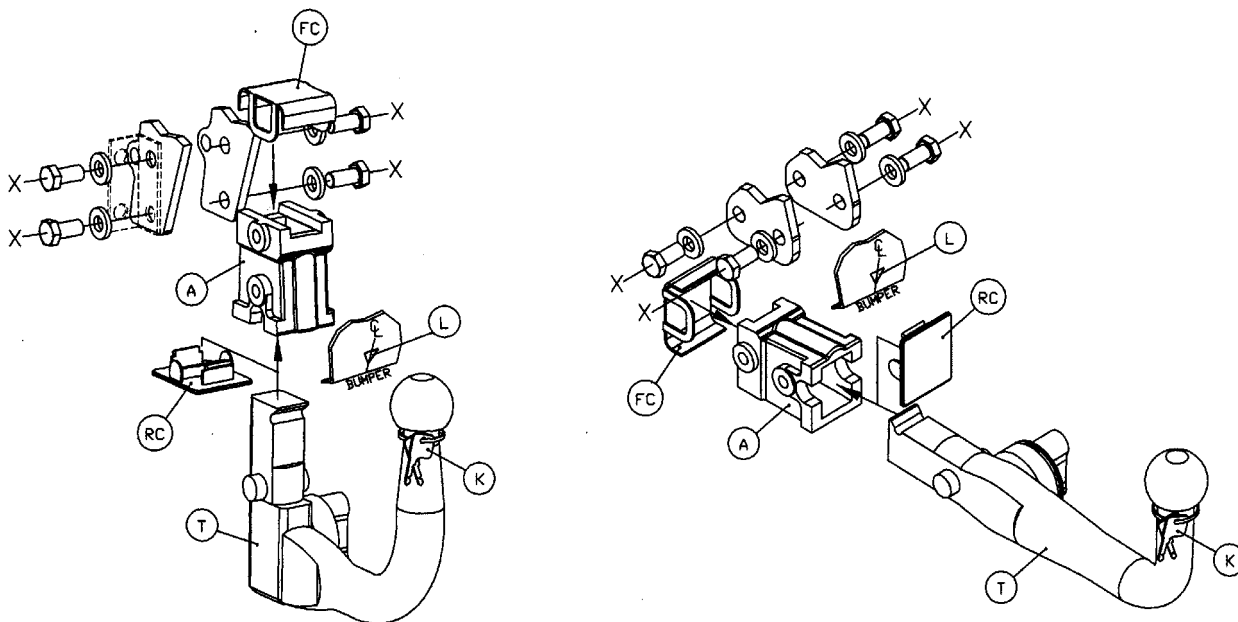
INSTALLATION PROCEDURE

1. Place black plastic fixed weather cap (FC) over forward/ (horizontal system) / upper (vertical system) holes of receptor/socket (A), insert receptor/socket (A) into gap between mounting plates on the towbar, and loosely attach using bolts (X).
 - Notes: (ZEQ1), which is provided as part of the towbar should be refitted on left hand side, together with the electrical socket mounting plate (ZEP1). Only use the 25mm O.D Flat Spacer Washers (X) where there are no loose components attached, i.e. ZEQ1 (electrical socket mounting plate bracket, shown in dashed linetype below).
2. Insert detachable towball unit (T), using procedure detailed in Operation Manual provided, and ensure correct vertical alignment of the towball before fully tightening bolts (X).
3. Attach centreline label (L) to lower edge of bumper.
4. Remove keys (K) from neck of towball, and record the key number in the Operation Manual, together with the fitters name, telephone number, date fitted, vehicle model and registration number and towbar part number.

Bumper Cut – It may be necessary to trim the bumper to allow adequate clearance around the operation handle on the right hand side.

Note: It is essential that the customer/end user is familiar with the operation of the towball system, as detailed in the operation manual, which must be handed to the customer/end user.

Recommended torque settings: M12 - 95 Nm



Important – It is essential to ensure that the Operation Manual is in the possession of the end user.