



# Fitting Instructions

TOWBAR PG40A & PG40AQ  
Peugeot 307 Hatchback and  
Citroen C4 (3-Door Coupe Model Only)

## MATERIALS

A	1	Cross Bar
B	1	Right Hand Side Arm
C	1	Left Hand Side Arm
D	2	M8 x 25 x 3mm Flat washers
F	4	M10x1.50mm Nut, Lock Washer and Flat Washer (30mm O.D.)
G	4	M10x40x1.50mm Bolt, Flat Washer (25mm O.D.), Lock Washers and Nut
H	4	M8x50x1.25mm Set Bolt, Flat Washer (25mm O.D.), Flat Washers (20mm O.D.), Lock Washer and Nut
Z99	1	ZEP5, Neoprene washer, M8 x25 x1.25 Bolt and Nyloc Nut.
ZEQ5	1	Electrical Plate Bracket
	1	Witter Towball Cover

**Note:** Towbar will not fit the Citroen C4 Coupe Petrol VTS 2.0i 16v 180hp. Vin no. VFLARFK

## For use with either

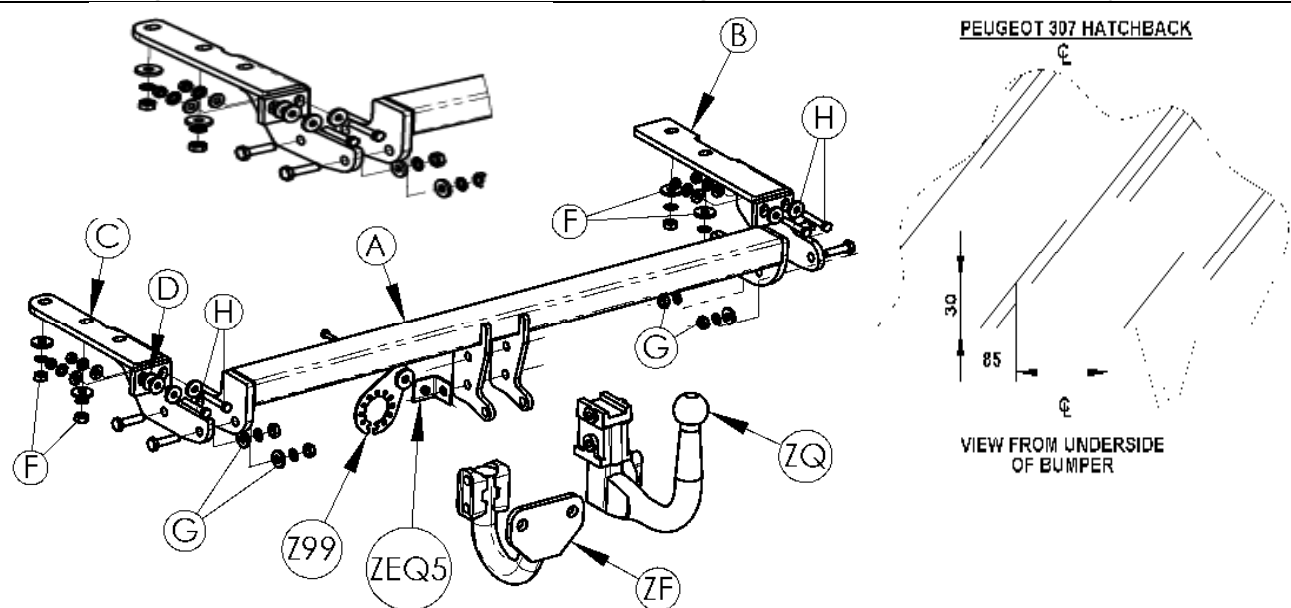
**PG40A Flange neck option – ZF3022A.** **Note:** This towbar must be used with either a Witter Towball (part number Z11) or Class A50-1 or A50-X towball dimensionally Conforming to A50-1 with a 'D' and 'S' value greater than or equal to that of the towbar.

**PG40AQ Detachable neck option – ZQ3022.** Please refer to ZQ fitting instructions for installation

## FITTING

1. From the underside of bumper undo the off-centre bumper tag..
2. Remove the x3 bolts from the rear panel of the vehicle. Discard and replace with x4 Set Bolts and Flat Washers (25mm O.D.) **Ensure all forward facing mating areas are free of mastic.**
3. Also add a fourth Set Bolt and Flat Washer (25mm O.D.) from fixing (H) to the rear panel, ensuring that washers (D) sit on the forward face of the rear panel, simulating the thickness of the absent nut. **Please Note:** It may ease fitment if Bolts (H) are only partially threaded before Side arms (B and C) are fitted.
4. Remove lashing eyes, and loosely locate Side Arms (B & C) over the horizontal bolts (H) and existing vertical studs. (On the HDI GT model there is an additional slot on side arm (C) to accommodate the rear most exhaust hanger. Use existing fixing)
5. Loosely attach using fixings (F) and the remaining fixings of (H). **Please Note:** It may ease fitment if Fixings (H) on the right hand side are tightened before fitting Cross Bar (A).
6. Carefully feed Crossbar (A) over the exhaust and loosely attach to the sidearm (B & C) using fixings (G). If necessary bend or remove the redundant metal, off centre bumper tag connected to the lower edge of the back panel.
7. Attach preferred neck and Electrical Plate Bracket (ZEQ5) to centre profiles. Attach Electrical plate (ZEP5) to Bracket using remaining Z99 fixings. **Fully tighten all remaining fixings to the recommended torque setting.**
8. On the **Peugeot 307 only**, if you wish to re-attach the off-centre bumper tag to the underside of the bumper; it may be necessary to make a small cut for the centre profiles as illustrated below.

Please refer to the vehicle specification for the trailer weight and nose limits, which **must be observed**. **Recommended torque settings:** M8 - 27Nm, M10 - 53 Nm, M16 - 214 Nm , **10.9 grade M12-120Nm (ZF neck bolts only)**



W0001PG40A-FIT\$010904060000