



Fitting Instructions

TOWBAR R5B
For RANGE ROVER AND DISCOVERY
ADJUSTABLE HEIGHT
1989 – July 1998

MATERIALS

| | | |
|----|---|--|
| A | 1 | Adjustable Slider with international facing to ISO 3853 (BS AU114) and alternative coupling holes or mounting for four hole coupling |
| A1 | 1 | Main Support Frame (provided with mountings for two electrical sockets) |
| C | 2 | Side Bracing Arms |
| D1 | 1 | Spreader Plate |
| F | 2 | M12 x 100mm Bolts, Nuts and Lock Washers |
| H | 2 | M12 x 25mm Bolts, Nuts and Lock Washers |
| J | 2 | M10 x 110mm Bolts, Nuts and Lock Washers |
| P | 2 | Main Pins with safety clips |
| CB | 2 | M16 x 50mm Coupling Bolts, Nuts and Lock Washers |

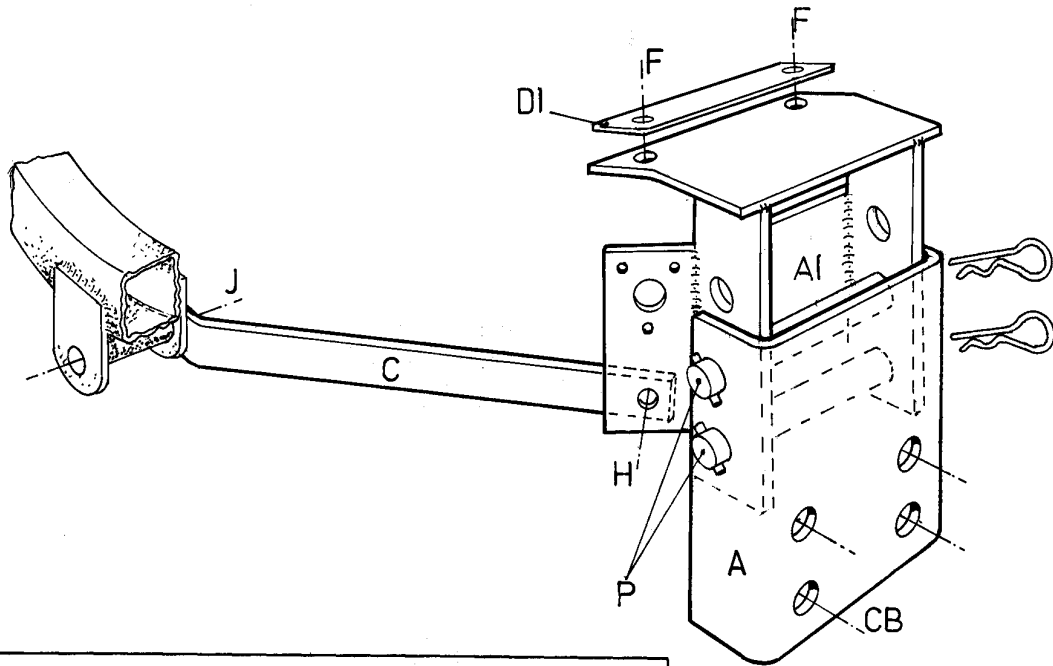
FITTING

1. Loosely attach the Main Support (A1) to the holes provided in the rear frame with Bolts (F) using Spreader Plate (D1) above.
2. Remove the towing eyes at (J) and attach the Side Arms (C) to the vehicle, and to the main support with Bolts (H). Finally tighten all bolts.

NOTE: Two holes are provided in the forward end of item (C). For normal fitting use forwardmost hole. When fitting to a Discovery fitted with a drop down step, use the rearmost of the two holes.

Please refer to the vehicle specification for the trailer weight and nose limits, which **must be observed**.

Recommended torque settings: M8 - 27Nm, M10 - 53 Nm, M12 - 95 Nm, M14 - 150 Nm, M16 - 214 Nm



L.H. Sidearm

Land Rover Discovery:
Use this hole only when
fitted in conjunction
with step.

