



# Fitting Instructions

TOWBAR For  
**RENAULT CLIO III RN93Q**  
October 2005-  
**Renault Grand Modus**  
February 2008-

## MATERIALS

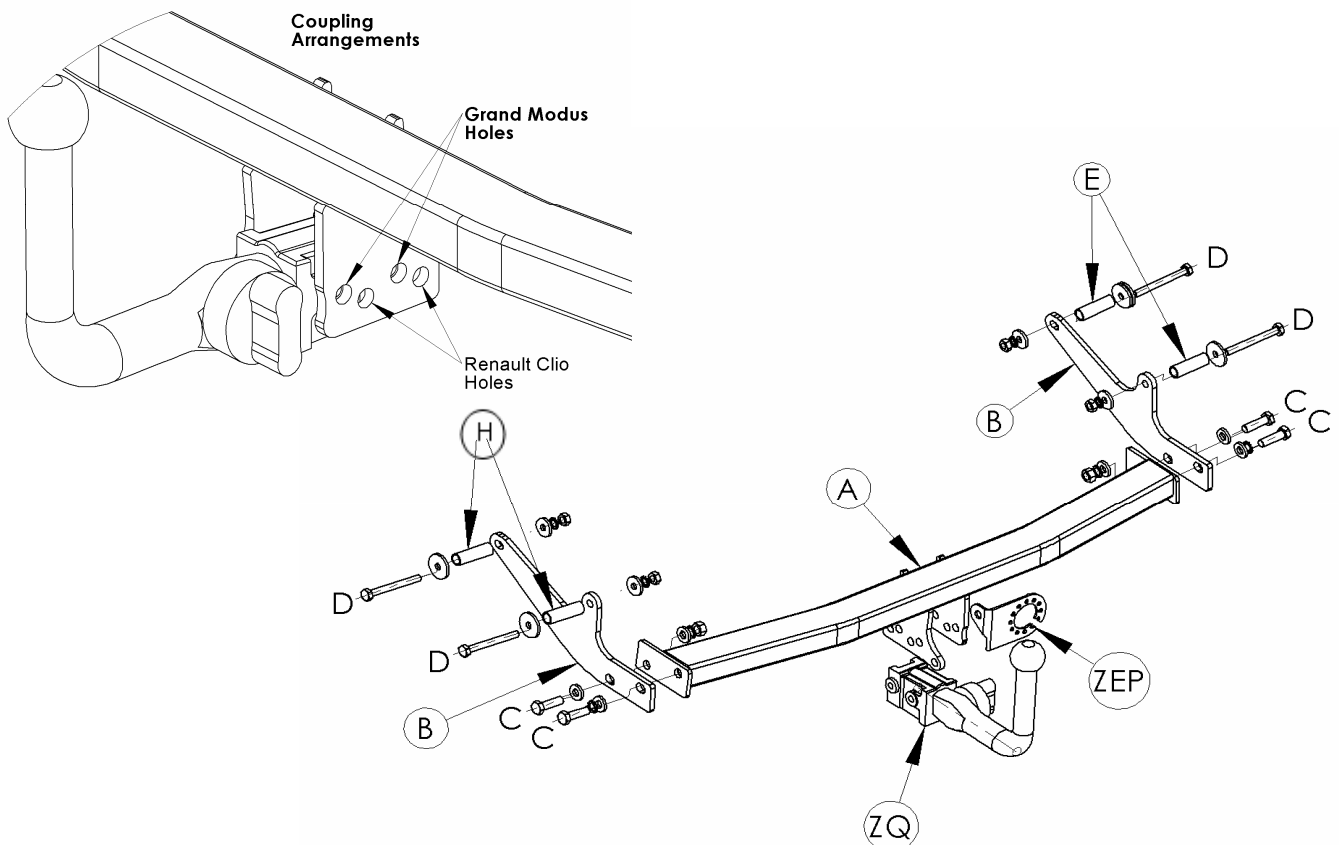
A	1	Cross Bar
B	2	Side Arms
C	4	M12 x30 x1.75 mm Bolts, Lock Washers, x2 Washers (25 mm OD) and x2 Nuts
D	4	M10 x 95x 1.50 mm Bolts, Lock Washers, x4 Washers (30 mm OD), x5 Washers (40 mm OD) and Nuts <b>(Grade 10.9- Torque Setting 71 Nm)</b>
E	2	Bushes (58 mm Long, 19 mm OD)
H	2	Bushes (62 mm Long, 19 mm OD)
ZEP	1	Electrical Pate (ZEP 2)
ZQ	1	Quantum Detachable Kit (ZQ 2030)
	4	M12 Protection Caps

## FITTING

1. Loosen the plastic rear wheel arch linings on each side (**x2 Torq Screws and one plastic finger nut on each side**).
2. Bend back the edge of the heat shield to locate and uncover the x2 horizontal holes passing through each of the chassis rails. **Note:** it is essential that the holes and mating surfaces are fully clear of any mastic compound and extrusions. **Note:** it is essential that the holes and mating surfaces are fully clear of any mastic compound and extrusions.
3. Carefully slide Bushes (**E**), with the Bolts and 40 mm OD washers from fasteners (**D**) into the existing holes located on the outer faces of the chassis rail, taking care not to drop the bushes into the enclosed chassis rail. **Note:** Due to vehicle tolerance, on the Right Hand Side forward most fixing it may be necessary to space out the bolt by using x2 40 mm OD washers under the bolt head, as illustrated below.
4. Loosely attach the Side Arms (**B**) to the inner faces of the chassis rails using the 30 mm OD washers and remaining fasteners (**D**).
5. Slide Cross Bar (**A**) between the side arms and loosely attach using fasteners (**C**).
6. Fix the detachable neck (**ZQ**) and Electrical Plate (**ZEP 2**) as per the additionally provided fitting instruction.
7. Position the neck (**ZQ**) to its desired height and fully tighten all fixings to their recommended torque settings.
8. Finally, reattach the plastic rear wheel arch linings, and bend the heat shield back into place.

Please refer to the vehicle specification for the trailer weight and nose limits, which **must be observed**.

**Recommended torque settings:** M8 - 27Nm, M10 - 53 Nm (**Grade 10.9- 71Nm**), M12 - 95 Nm (**Grade 10.9- 139 Nm**), M14 - 150 Nm, M16 - 214 Nm



W0001RN93Q-FIT\$08040080000